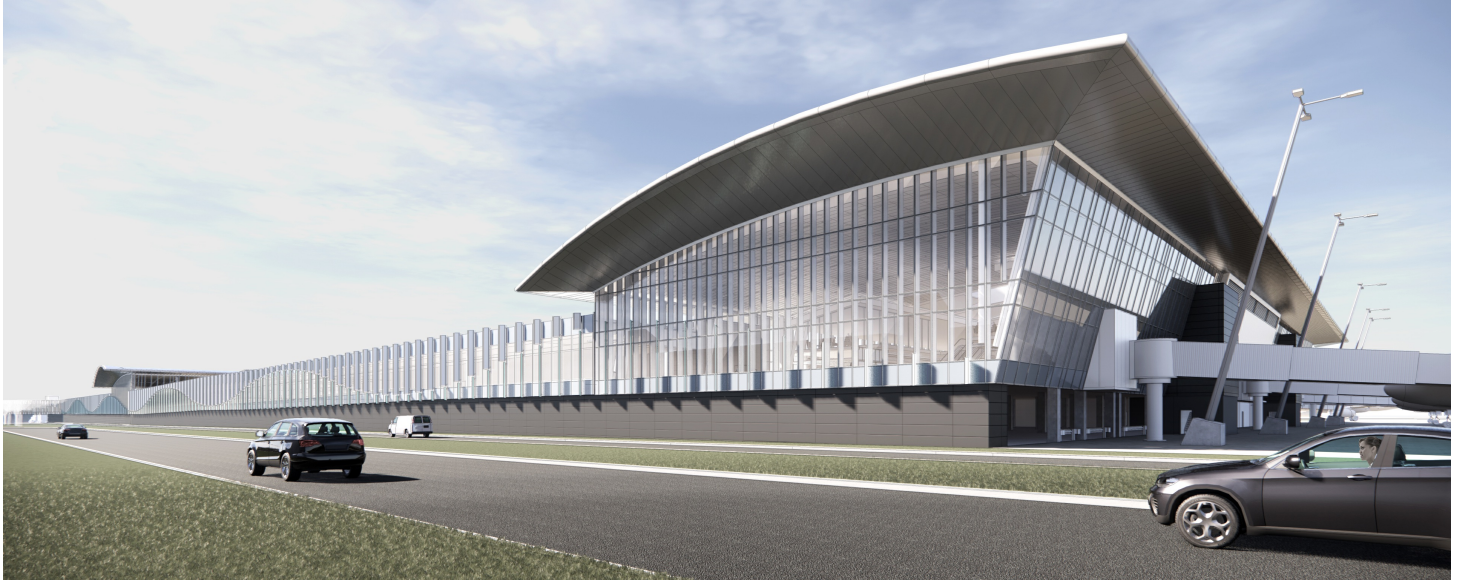


Concourse A Phase II is Underway



CHARLOTTE, NC – Concourse A Expansion – Phase II construction is underway and scheduled for completion in fall 2024. The 10-gate addition will house Delta Air Lines and three common use gates.

The 191,848-square-foot expansion will feature auto-tinting window glass to help control the temperature and sunlight inside, hold room seats with integrated power to charge electronic devices, terrazzo flooring in the center walkways and two new art pieces that are currently in development.

Concessions will include a retail store, a restaurant and two open bars. Restrooms will be equipped with modern finishes and water-saving toilets and sinks.

The addition will be wider than CLT's other domestic concourses for an open, spacious feel that is accented by high ceilings and scenic windows.

Overall cost of the project is approximately \$231 million. It will be paid for by a North Carolina Airport Improvement Program state grant, Passenger Facility Charge bonds and non-Passenger Facility Charge bonds. JE Dunn and McFarland, a joint venture, are construction contractors for the project, which was designed by C Design and Perkins+Will.

Last month, the Airport opened Concourse E Expansion, which added one gate to the concourse's north end and relocated nine existing gates to the new space for operational efficiency and to prepare for jet bridges installation by 2023.

CLT follows a demand-driven construction approach. Projects are built when passenger growth requires it.

Stay connected with the Airport, follow @CLTAirport on [Facebook](#), [Twitter](#) and [Instagram](#). Get the latest Airport news at cltairport.mediaroom.com or sign-up to receive CLT's electronic newsletters at cltairport.mediaroom.com/newsletters. Also remember to download the free, all-in-one CLT Airport app at the [App Store](#) or on [Google Play](#).

Additional assets available online:



Photos (3)

https://stage.mediaroom.com/cltairport/Concourse_A_Phase_2_Underway