



Company overview

Every day, we are changing the world

From connected cars to intelligent homes, from drones to door locks, our semiconductor products are at work to improve and enhance **every type of electronic system.**



Look around you – we are there

We engineer, manufacture, test and sell analog and embedded semiconductor chips – **key ingredients** in things you experience every day.



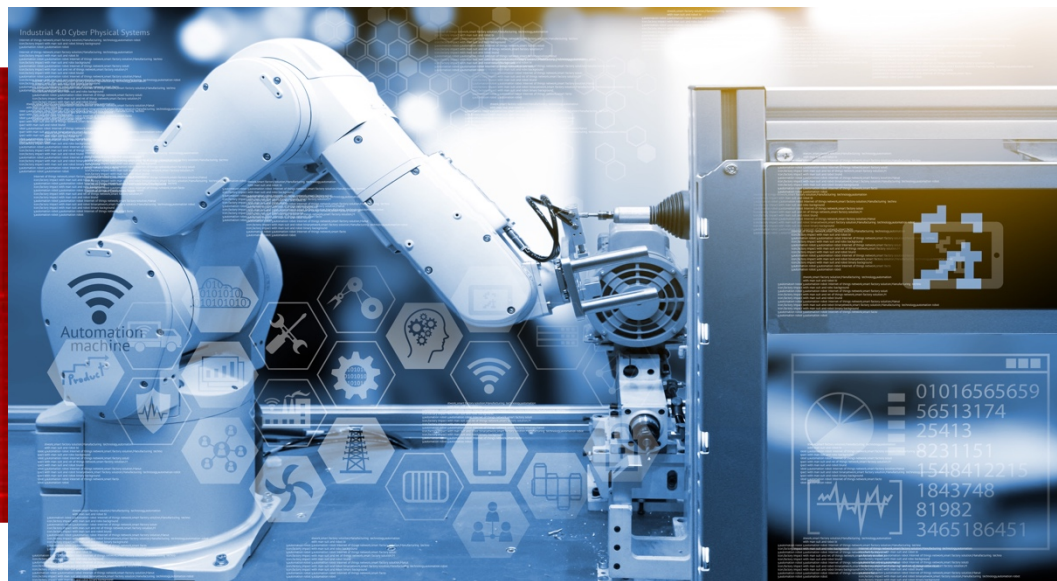
Analog

Embedded
Processing



We are focused on driving innovation in industrial and automotive

Our innovations are paving the way for advancements across the **industrial and automotive** markets.



Our people redefine what's possible



Our **30,000** employees in more than 30 countries are relentless in their drive to solve problems and help our 100,000 customers succeed.



Our manufacturing provides assurance of supply

Our **flexible manufacturing strategy** and **commitment to longevity of supply** helps ensure we can reliably deliver the products companies need.



We cultivate an inclusive culture

Our values of integrity, innovation and commitment are at the core of all we do. Our **diverse and inclusive culture** makes our company **stronger** and our products more **innovative**.



We engineer a better tomorrow



Our **communities are stronger** because we invest to safeguard the environment, volunteer our time and give generously to STEM education programs that teach the next generation of innovators.

Learn more about who we are and what we do

Table of contents

- Company strategy Slides 10-14
- Markets we serve Slides 15-19
- Manufacturing Slides 20-23
- Innovation Slides 24
- Citizenship and education. Slides 25-29

Company strategy: A business model built on four sustainable competitive advantages



The **broadest portfolio** of differentiated **Analog & Embedded Processing** products



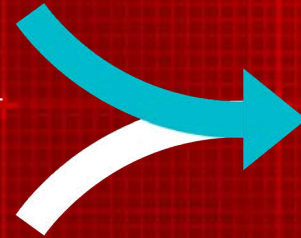
The **broadest reach** of our market channels



The **diversity & longevity** of our products, markets & customer positions



A strong foundation in **manufacturing & technology**



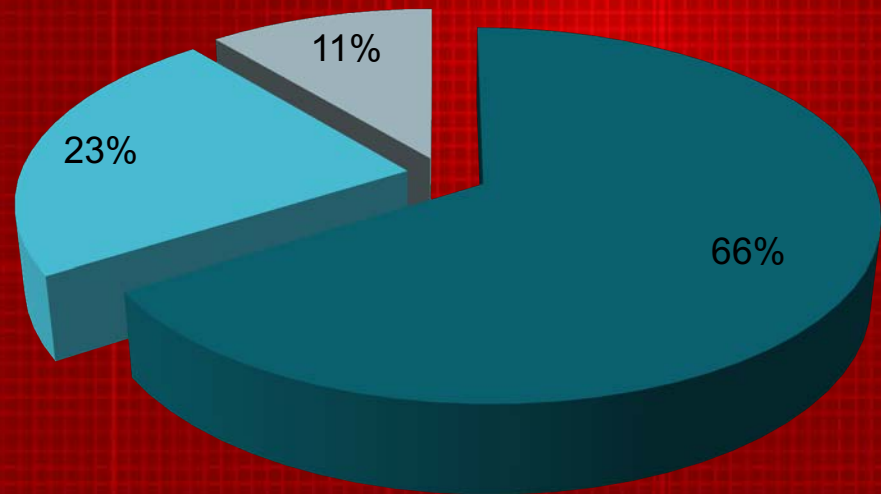
Puts us in a **unique class of companies**

Allows us to **grow, generate & return cash** to owners

We are focused on analog and embedded processing products

2017 Revenue: \$14.96 billion

Analog and embedded processing products are **pervasive technologies**; they underpin most electronic products today and are the enablers of the **electronics of tomorrow**.



■ Analog \$9.90 billion ■ Embedded \$3.50 billion ■ Other \$1.56 billion

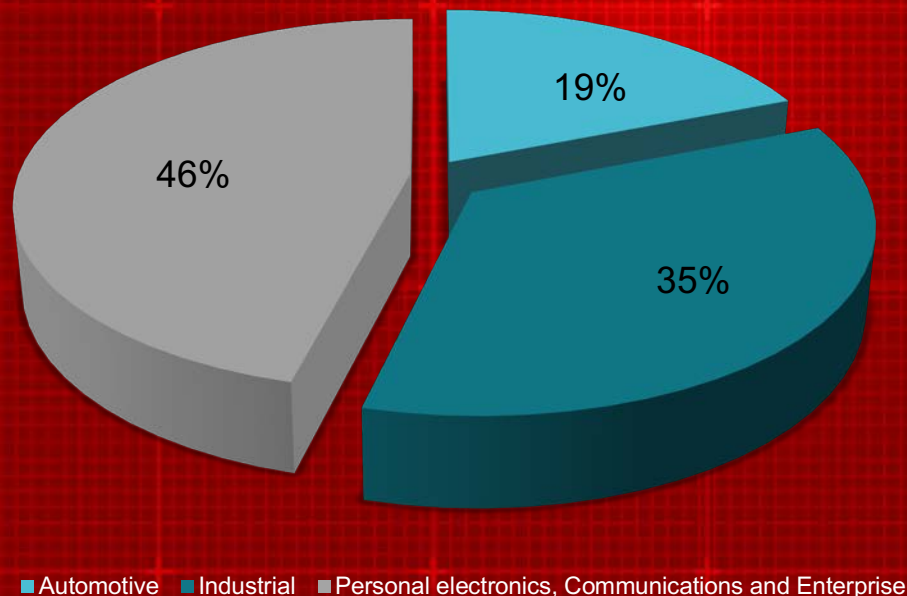
We are focused on industrial and automotive

Automotive and industrial comprised 54% of TI's 2017 revenue

These markets are attractive

because they are:

- Rich in analog & embedded processing content
- Diverse, with thousands of companies
- Broad base of long-lived product lifecycles
- Growing as semiconductor content expands



Our products make electronics work

Gather
information from
the real world



Convert



Process

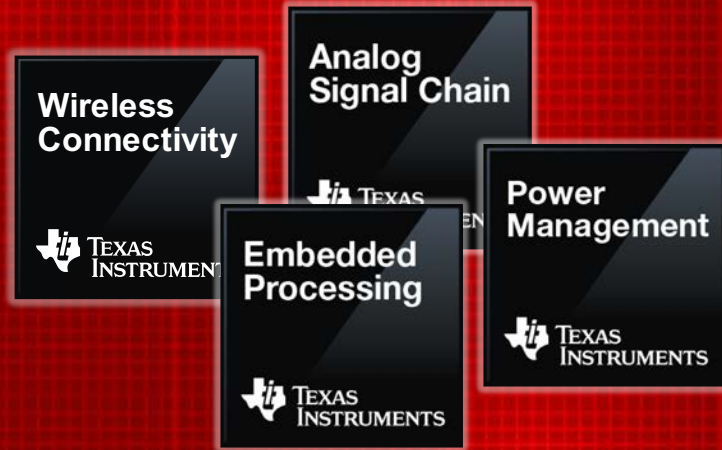


Convert



Output to the
real world

Our broad portfolio gives customers what they need



We have the **circuits and expertise** to help customers create innovative, differentiated applications.

Our products help efficiently manage power, accurately sense, condition and transmit data, or provide the core control or processing in system designs

Markets we serve

Companies in every market continue to **add more electronics** to make their products smarter, safer, more efficient and more connected.



Industrial



Automotive



Personal electronics



Communications



Enterprise

System approach to solving design challenges



Our systems engineers are experts at **understanding our customers' system-level challenges** and designing solutions to help them **get to market quickly.**

We help companies deliver what's next in industrial systems

- Factory automation
- Grid infrastructure
- Motor drives
- Building automation
- Medical
- Aerospace & defense
- Appliances
- Display
- Industrial transport
- Retail automation & logistics
- Lighting
- Power delivery
- Test & measurement

We accelerate the future of automotive systems



Driving what's next, from electrification to autonomous driving to the connected car:

- Hybrid/electric vehicle/powertrain
- Advanced driver assistance systems
- Body electronics and lighting
- Infotainment
- Passive safety

TI.com: online resources and support 24/7

TI Designs

TI store



TI Training

WEBENCH Design Center

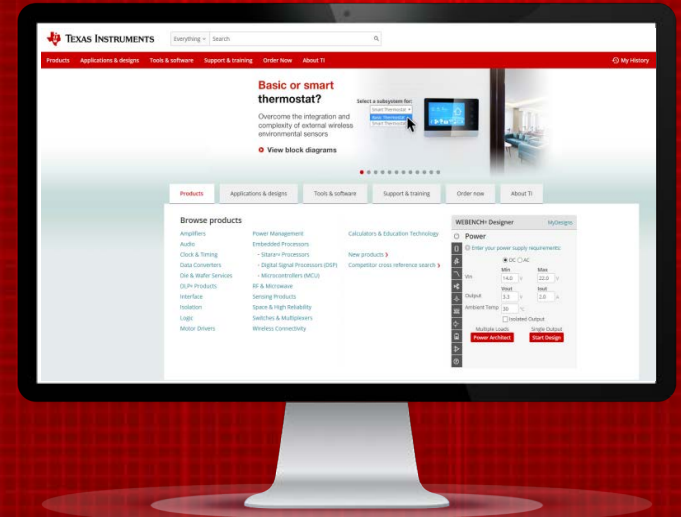
Technical Documents

On TI.com, you can:

Search about
3,000 reference designs to solve specific, system-level challenges

Customize an analog design, built online in minutes with **WEBENCH®**

Find online and in-person customer trainings and tech days



Flexible manufacturing strategy ensures continuity of supply

Manufacturing

15 manufacturing sites worldwide

- Wafer Fabs
- Assembly/Test
- ★ TI headquarters

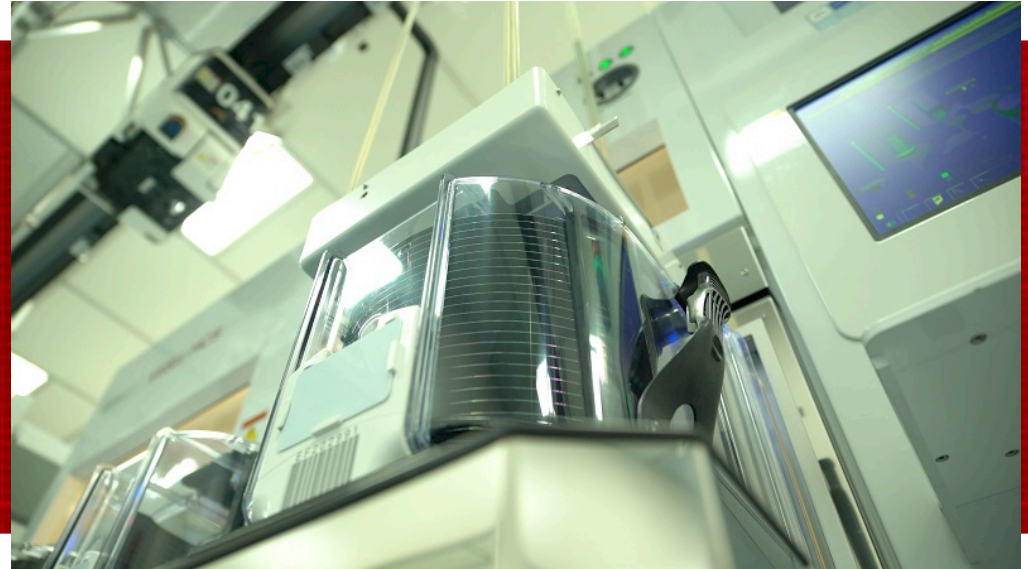
N. Texas

DFAB 150mm, 200mm	DHC MEMS
DMOS5 200mm	DMOS6 300mm
SFAB 150mm	DBUMP
SC Test	RFAB 300mm



Advanced 300mm analog manufacturing

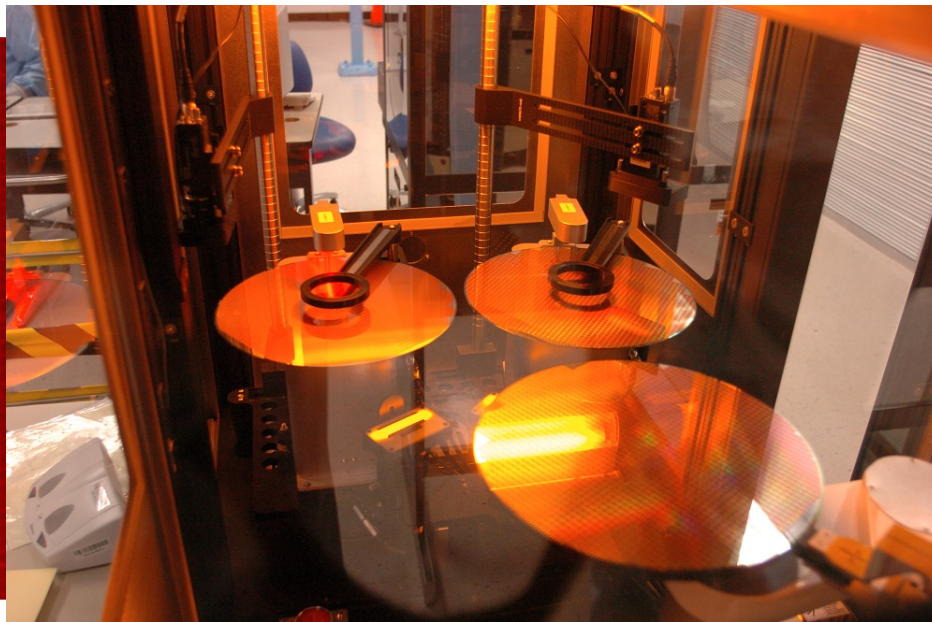
Our **300mm** analog manufacturing produces **more chips per wafer**, which increases production volume and reduces cost.



Innovative product & packaging technologies

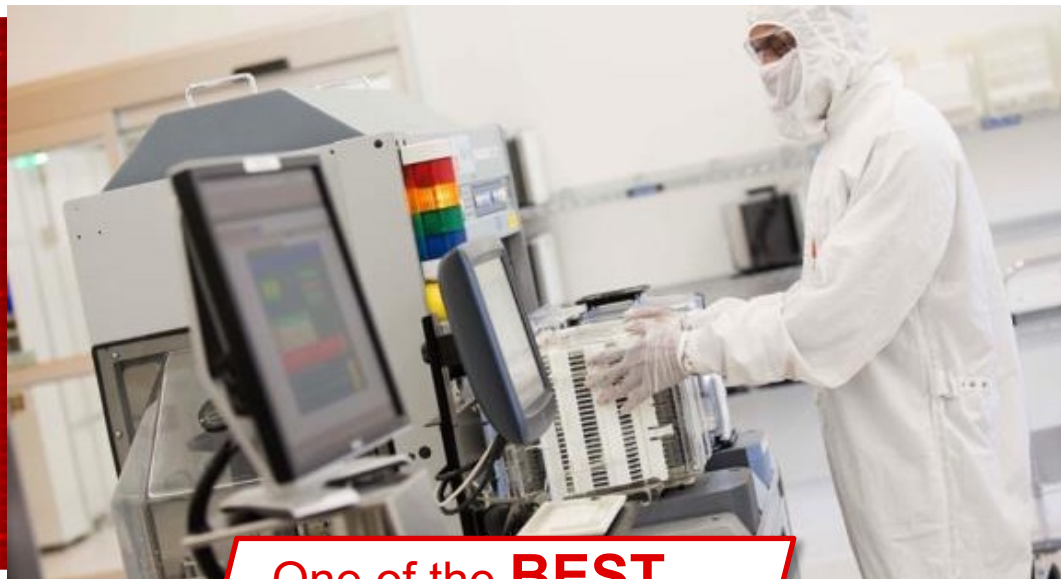
Our proprietary process and packaging technologies help enable:

- Smaller sizes
- Faster speeds
- Higher precision
- Lower power
- Increased functionality
- Greater reliability



Holistic approach to quality and safety

Quality **permeates our operations** – across supply chain management, process technology and design and manufacturing, packaging and test.



One of the **BEST**
U.S. safety records*

*OSHA 2016

Our disciplined investments in innovation produce results



\$7 BILLION
INVESTED in **R&D**

*Since 2012

Kilby Labs serve as incubators for **new concepts** and **breakthrough ideas**. These innovations are conceived and productized in **every corner of our company**.

Citizenship & education: We invest in our communities



\$3.2M given through matched gifts and volunteer grants



\$150M+ given to K-16 science, technology, engineering and math (STEM) education in the last 5 years*



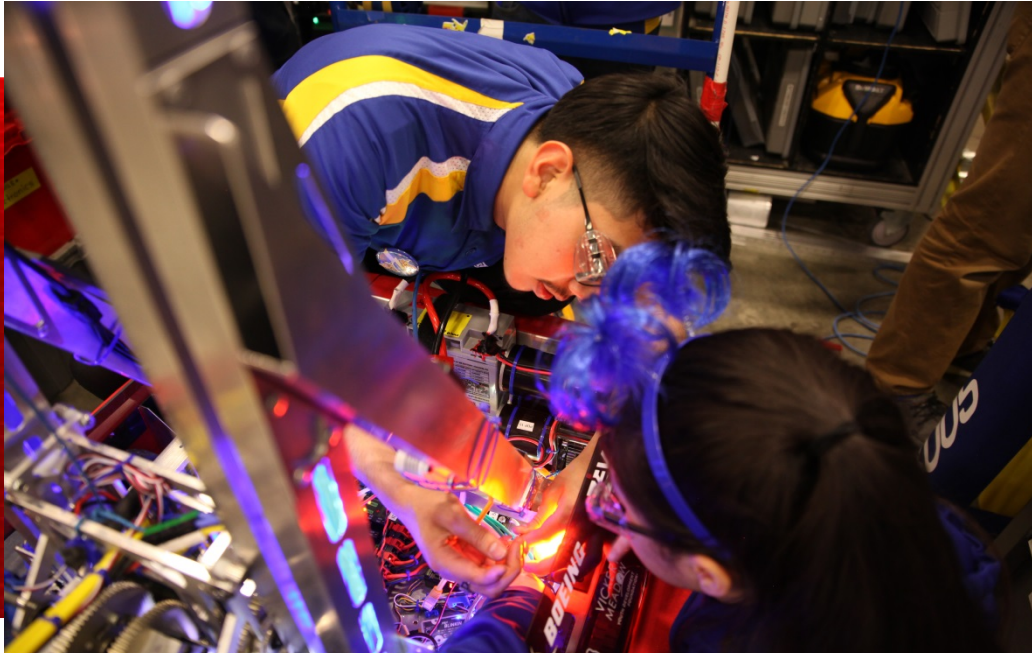
16 community involvement teams coordinate volunteerism around the globe

We help students across the globe to engineer their futures



We provide educational products that **unlock the mysteries** of science, technology, engineering and math (STEM) to help students **discover what's possible.**

We support robotics competitions that engage students in STEM



Robotics and design competitions **nurture STEM learning** skills and development in >600K students worldwide.



We collaborate with professors on engineering curriculum

We provide students and professors the resources they need:

- Coursework and teaching materials
- Hands-on lab learning environments
- Design inspiration
- Research projects
- Online tutorials
- Engineer-to-engineer discussions
- Products and tools to enhance the learning experience

We have more than **8,000 technology labs** in teaching departments at universities worldwide.

We have created **450 TI-based textbooks** in 10 languages.

A career at TI creates a world of opportunity



- Internships and rotation programs
- Early career and experienced professionals
- Technicians and operators